



Bi-Flow - The only femoral arterial bidirectional cannula designed to easily and safely prevent limb ischemia.



Expanding Advanced Circulatory Support portfolio with TandemLife acquisition



Bi-Flow Arterial Cannulae - Direct insertion - Animation



Bi-Flow Percutaneous Insertion in MICS



Bi-Flow insertion in Mini-AVR





Bi-Flow – The only femoral arterial bidirectional cannula designed to easily and safely prevent limb ischemia.

LivaNova leads the fight against leg ischemia with breakthrough bidirectional cannula

Our Bi-Flow femoral arterial cannula has been specifically designed to prevent leg ischemia in an easy, safe and reproducible way.

The innovative, patented and award-winning design of the bidirectional cannula incorporates a unique shoulder and downstream perfusion channel that enables continuous and reliable blood flow down the femoral artery. At the same time, an open tip design ensures adequate systemic perfusion for the whole body.

This makes Bi-Flow the only cannula able to provide continuous, reliable blood flow down the femoral artery to adequately perfuse the limb, improving the safety of femoral artery cannulation during minimally invasive, redo and other complex cardiac surgery procedures.

For more information about the LivaNova Bi-Flow bidirectional cannula, please visit our [product highlights section](#), where you will also find:

- Complete product information and product brochure
- Clinical summaries of our first in human trials and in-animal model
- Educational and instructional videos, both animated and in-OR

Not approved in all geographies. For further information on product availability, please contact your local representative.
For indications, contraindications, precautions and warnings for each device, please refer to the Instructions For Use

IM-02612 A



PRODUCT HIGHLIGHTS

Expanding Advanced Circulatory Support portfolio with TandemLife acquisition



The TandemLife platform also includes a family of unique cannulae that can provide unmatched versatility and designed to meet the needs of the most demanding mechanical cardiac support (MCS) programs

TandemLife, manufacturer of Advanced Circulatory Support (ACS) devices, percutaneous Mechanical Circulatory Support (MCS) and Extracorporeal Life Support (ECLS) products, is now part of LivaNova PLC. The acquisition effectively extends LivaNova's reach into ACS with temporary cardiopulmonary support capabilities.

The demand for Advanced Circulatory Support (ACS) solutions continues to grow and technological advancements designed to increase ease of use and patient safety are essential to support the growth in the hospitals that wish to access these procedures. The TandemLife platform also includes a family of unique cannulae that can provide unmatched versatility and are designed to meet the needs of the most demanding mechanical cardiac support (MCS) programs

ProtekDuo is the only percutaneous dual lumen cannula that can be inserted at the Right Internal Jugular vein and is uniquely posi-

tioned to source venous blood from the right atrium and return it to the pulmonary artery. ProtekDuo delivers flexibility to do what's right for each unique patient.

The ProtekSolo Transseptal cannula provides unique cannula positioning, sourcing oxygenated blood from the left atrium, bypassing the left ventricle. Sourcing blood from the left atrium enables left ventricle decompression and consistent unloading throughout the cardiac cycle.

The overall versatility of the TandemLife platform effectively enriches LivaNova's cardiopulmonary-focused product mix and will help to further the advancement of ACS, reaching more patients in more places.

IM-02402



VIDEO

Bi-Flow Percutaneous Insertion in MICS



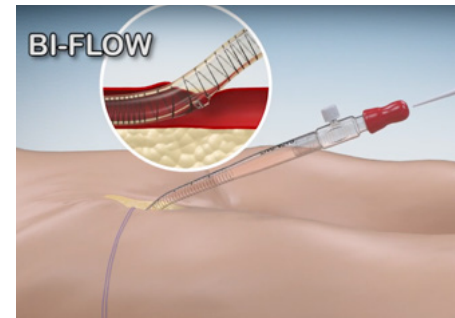
This video shows insertion of the Bi-Flow bidirectional cannula using a fully percutaneous technique.

Note how the cannula is easy to insert and remove even when compared to standard femoral arterial cannulae. The video was taken at the Alfred Hospital in Australia.

IM-02340

VIDEO

Bi-Flow Arterial Cannulae – Direct insertion - Animation

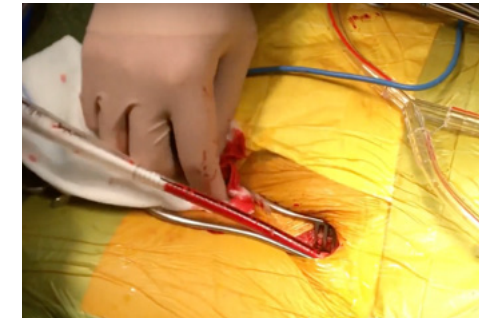


This video animation focuses on how Bi-Flow is inserted and removed with a surgical cut-down technique. It demonstrates Bi-Flow's ease of use and shows the main steps to follow to correctly position the cannula.

IM-02365

VIDEO

Bi-Flow insertion in Mini-AVR



This video shows the Bi-Flow bidirectional cannula inserted by Dr. Paulo Neves during a Mini-AVR case. The video was taken Hospital the Villa Nova de Gaia in Portugal.

IM-02826 A



WATCH VIDEO



WATCH VIDEO



WATCH VIDEO

This product may not be for sale in your country or your area. For further information on product availability, please contact your local representative. For indications, contraindications, precautions and warnings for each device, please refer to the Instructions For Use

LivaNova
Health innovation that matters